

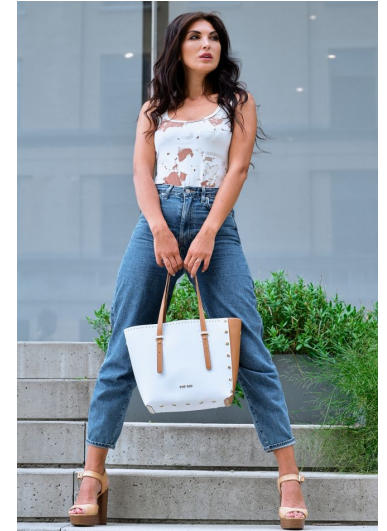
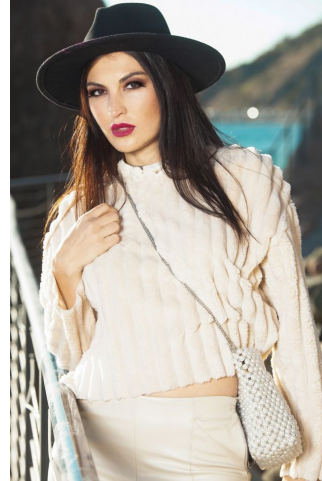
MPM MODELS



Tatiana Tayeh

Height : 5'8" / 173 cm | Bust : 34.5" / 88 cm | Waist : 26" / 66 cm | Hips : 37" / 94 cm | Shoe : 8.0 US / 6.0 UK | Hair Colour : Brown | Eyes : Brown

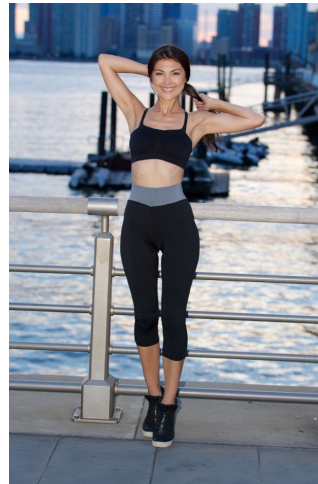
MIPM MODELS



EMPRELLA

Product page for a black sports bra and shorts set. The main image shows a woman wearing the set. To the right is a product shot of the shorts. Below are four smaller images showing different views of the product.

M P M MODELS



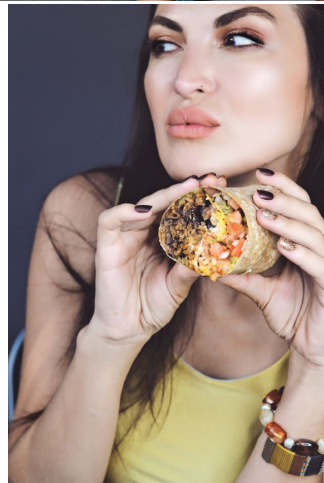
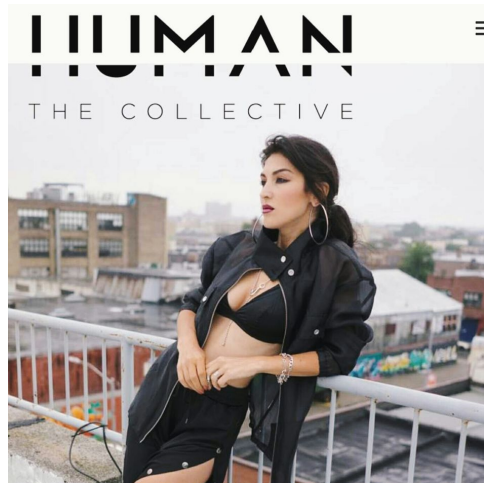
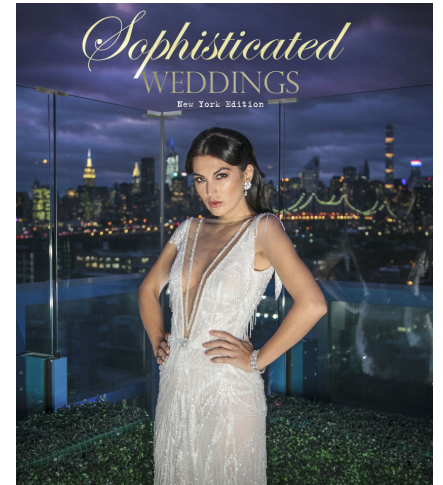
THE LUXURY LIVING REPORT: 14 HOME PRODUCTS FOR TIMELESS ELEGANCE



HOME » YOGA, FITNESS AND WORK PANTS » 33" CLARE
FLARE FITTED FLARE PANT | GREEN APPLE ACTIVE



MIPM MODELS



MPM MODELS



5. Matt Williams Canopy Chair

A home without a throne isn't a home at all. This 'throne chair', as we've so dubbed it, is a stunning steampunk sort

Tatiana Tayeh

Height : 5'8" / 173 cm | Bust : 34.5" / 88 cm | Waist : 26" / 66 cm | Hips : 37" / 94 cm | Shoe : 8.0 US / 6.0 UK | Hair Colour : Brown | Eyes : Brown